

September - October 2024

In Remembrance: pp 16-19



Alsea Valley Voice



Steve Moore, Michael Harding and Joel Garfunkel playing at the Blackberry Blast and Vendor Faire

Alea Valley Voice

September - October 2024

Volume 26, No. 5

Editor in Chief

Kathy Adair

Layout Specialist

Emily Blake

Production Crew

Naomi Shadwick, Debra Coddington, Kathy Plaza, Phillip Plaza,
Shelley Smith, Michael Hill, Peggy Duncan, Mary Ann Carr,
Cheryl Ross

Advertising Director

Meredith Howell

Printed by

Franklin Printing, Corvallis, Oregon

The Alea Valley Voice is a publication of the Alea Community Effort

President Meredith Howell

Treasurer Michael Hill

Secretary Kathy Plaza

Alea Valley Voice (AVV) (USPS Permit No. 135) is published bi-monthly, and free for residence of Alea Oregon and the surrounding communities by Alea Community Effort, 19192 Alea Highway, Alea, Oregon 97324 - a nonprofit 501(c) Organization serving the social and economic needs of our rural community. Preferred periodical postage paid at Alea, Oregon 97324. All rights reserved. Reproduction in whole or in art without written permission is prohibited.

Postmaster: Send address changes to ACE /AVV 19192 Alea Highway, Alea, Oregon 97324

How to contact the AVV:

Email

Aleavalleyvoice1@gmail.com

Subscription services

Nonresident subscriptions \$25.00 (U.S.) per year: \$25 per year (Foreign).
Prepayment required. Allow 4-8 weeks for first issue.

Address changes

Call us at 541-487- 8696 or email info@alseacommunityeffort.org

Display advertising inquires

Meredith Howell: 541-760-6255 or mhowell@nwumpqua.org

Inside This Issue:

- 3 Letter from the Editor
- 4 Musings from the ACE President
- 5 Blood Drive – Save the Date
- 6 Library Lines
- 7 Alea School District Update
- 8 Dhira Lawrence Exhibit
- 9 Grange Christmas Bazaar Poster
- 10 Confederated Tribes of Siletz
- 11 Siletz Tribe Thank You
- 12 Blackberry Blast and Vendor Faire
- 14 Thank You, Lochmead Dairy
- 15 Art Unveiling Event
- 16 Ethan Cantrell
- 18 Les Hockema
- 19 Matt Clark
- 20 Benton County Update
- 21 Alea Garden Club
- 22 Free Nitrate Screening
- 23 Highway 20 Safety Group



Host an Exchange Student
Enjoy a friendship for a lifetime.
 Study Abroad Programs Also Available.

Call us Today! (720) 452-1522
 asseusawest@asse.com - www.asse.com

asse
 INTERNATIONAL STUDENT EXCHANGE PROGRAMS

Letter From the Editor

By Kathy Adair

The weather is changing and hints of fall are knocking on the door. So much has happened this spring and summer, it seems, for most everyone. Tough things and celebrations alike, both public and private, have touched most of us in some way. Our wonderful community is resilient and strong, supportive and encompassing. One of the biggest takeaways is that we cherish and encourage one another. Overlook the differences, political and otherwise, and see that everyone is special in their own right. We are fortunate to live in a special community where if the going gets tough, people rise up and lend a helping hand. I applaud and appreciate every one of you.

This issue of the AVV encompasses both celebration of activities and celebrations of lives recently passed. There is also information on upcoming events. And pictures! Lots and lots of pictures! This is possibly the most visual edition we have put together in many years.

If you would like to submit an article, please let me know. The next deadline for article submission will be **November 15th, 2024**. This will be for the November/December issue. If you are an organization or business, think about what is coming up that you would like the community to know about and let's get something in the AVV. It is helpful if articles are in Word format and emailed to me. PDF does not work very well. Many thanks to all of you who submit articles.

As always, if you have questions or article submissions, please don't hesitate to message me on Facebook Messenger or email me at our AVV email – AlseaValleyVoice1@gmail.com. Don't forget the "1" on the email. You can also still reach me on my personal email.

Mainline Pump & Irrigation LLC
 INSTALLATION • SALES • SERVICE • REPAIR
All Your Water Needs - Serving You Since 1972

541-929-3870

815 Applegate Street
 Philomath, OR 97370
 Waldport, OR 541-563-8554
 Toll Free: 877-929-3870
www.mainlinepump.com • service@mainlinepump.com



ONE on ONE Realty

A Full Service Brokerage
 Experienced in Rural Land Use Issues
 1010 Main Street ~ Philomath, OR
 Email: OneonOneRealty@peak.org

Shop Online: OneonOneRealty.Net



Scott Parker
 Principal Broker
 541-609-0126

The Franklin Press

COMMERCIAL PRINTING
 office: 541-753-0303 • fax: 541-758-7658
customerservice@franklinpress.org
 5655 SW Philomath Blvd • Corvallis, OR 97333

Your source for copies, printing & binding

**We do Load Ticket Books
 and other unique items.**

**Bring this ad in
 for a \$5.00 discount
 on any order over \$50.00.**

Musings from the ACE President

Thank you to the many community members and visitors who made the September Blackberry Blast a successful event. Please see the article about the event including many photos in this edition of the AVV (p. 12-13).

The ACE Art Committee and ACE Board members will be hosting a second Artist’s Reception and Unveiling on Saturday, October 19th for Cottage Grove-based artist Uyen-Thi Nguyen and her painting that will be installed in front of the children’s library area. Uyen-Thi Nguyen, who also goes by UTN, responded to the Art Committee’s Call to Artists and submitted her entry in January 2024. Norma Eaton and UTN were both chosen from among nine other artists and groups of artists to create a permanent installation for the library. Funding for the second art commission and installation was provided by the Friends of the Corvallis Benton County Library and the Siletz Tribal Charitable Contribution Fund. See more about the unveiling event on page 15. And please plan to stop by and see the new art piece and enjoy catering by the Thyme Garden.

Thank you to everyone who shared information about local healthcare needs on the survey developed by the Community Health Centers of Benton and Linn Counties (CHC). Lacey Mollé, the new Executive Director of the CHC, will be meeting with the ACE Board of Directors to share the results of the survey. We hope to have those results posted on our website after the meeting, and look forward to continuing to work with Lacey and her team on healthcare support for the community.

The ACE Board welcomes ideas, suggestions, concerns, and questions about community events or ideas for community building. Please send ideas through postal mail (19192 Alsea Highway, Alsea, OR 97324) or drop off comments and notes in our comment box inside the library building.

Meredith Howell, ACE President



Alsea Community Champions - Pledge Form

I (we) will contribute \$ _____ towards the Alsea Library Community Center operations, Maintenance Fund, and/or Alsea Valley Voice newsletter. Please make checks payable to Alsea Community Effort, or A.C.E., and mail donations to 19192 Alsea Hwy, Alsea, OR 97234. You can also drop donations off at the library.

Name(s) _____ Phone _____

Address _____

E-Mail _____

- I (we) would like my donation to remain anonymous
- Please contact me(us) to set up automatic deduction payments

Alsea **STILL** needs New Blood

This is a follow up to my article 2 years ago, and I am reaching out once again as the situation remains. The Alsea Community Blood Drive is held twice a year in November and April, and we sincerely need new folks to step up to donate blood.

I have been the Alsea Coordinator for over 20 years. We have had many dedicated blood donors, but with time many have reached stages in Life when they are no longer eligible to donate for various reasons. Thus, we need more of our “new” residents to step up to donate. I know you are out there as I see so many names on Facebook “Alsea Neighbors & Friends”, but my efforts to recruit you wonderful folks haven’t succeeded—YET.

Likely everyone among us has friends or family members who have needed blood in an emergency, surgery, cancer treatment, or some other medical issue. With his permission, an example of this is local logger and High School Football Coach, Laric Cook, whose logging accident many years ago threatened his life. He is with us today largely due to (to his memory) over 30 units of blood transfused during his rescue and recuperation. Laric recently realized he is eligible to donate and has signed up to do so—THANKS for giving back 😊. Giving blood is truly giving the Gift of Life.

So it is up to each of us. The next Alsea Blood Drive is **Wednesday, November 13**, in the Alsea School Gym from 1-6 PM. It is by appointment, but now you can go online to American Red Cross to make your own appointment using our zip code on the “Find a Drive” link. Or you can download the Red Cross app. Or you can call me, leave a message and I will work with you for a convenient time: Mary Ann Carr (541) 487-7364. We try to SAVE at least 10 appointments from 1-2:30 PM for students as they often need to ride the bus home. “New Blood” put to best use ever!

Save Your Blood!

Blood Drive



Make Your Appointment to
Donate Blood at the

Alsea Community Blood Drive

Wednesday, November 13th
from 1-6 pm

Alsea School Gym
Make your own appointment
time online at

American Red Cross

Enter our zip code 97324 to get
the Alsea Blood Drive, create an
account and reserve your
appointment time!
OR Call Mary Ann Carr at
541-487-7364 & leave a
message.

Save your blood for the next Alsea Community Blood Drive on
Wednesday, November 13th, 1-6 PM.

You cannot donate after September 17th and still donate in Alsea (56 days
apart).

As usual the Blood Drive is in the Alsea School Gym and you can make
your own appointment online at American Red Cross, finding our Drive
by entering Alsea zip code 97324.

THANKS so much for supporting Alsea & the American Red Cross.

MID-VALLEY TIRE

34930 Wren Rd., Philomath, OR 97370
“In Downtwon Wren”



Mike Thomas

PH: 541.929.5756 Cell: 541.740.6164

Website: midvalleytire.net

Email: MBThomas60@yahoo.com

Serving all your
Car, Pickup & Truck tire needs since 1978

Library Lines

by Kathy Koetz

September is here and with it comes MORE HARVEST!! If you are trying to figure out how to take care of some of your fruits & veggies, remember our Library has both a pressure canner and a food dryer for you to checkout and use! We also have a large volume of books about canning, freezing and drying your bounty!

Stop in to see the latest art on our walls while you browse the stacks for just the right book or movie.

Coming in October:

Starting on October 2nd we will have Preschool Storytime at 9am on every other Wednesday morning. We hope this will work for all as our Alsea Pups Preschool class will be the first to take advantage of this new program. Other Alsea School classes will be coming over soon, but their Storytimes will not be open to the public.

We are having a Stuffed Animal Sleepover on Wednesday, Oct 16th: drop off 3:30-4:30 with pick up anytime on Thursday, Oct 17th 12-7pm.

Remember we have Lego Day! On the 1st Tuesday of each month and we have added Crafternoon on the 4th Tuesday. Both of these programs are 3:30-4:30pm.

October 1st – Lego Day! 3:30-4:30

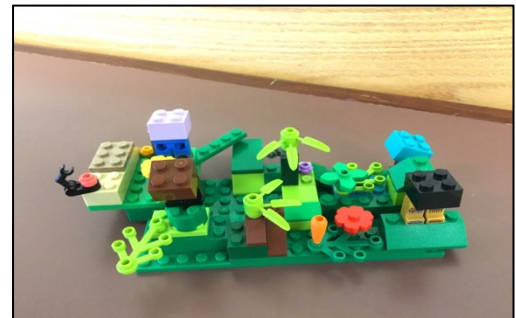
October 2nd, 16th & 30th – Pre-School Storytime 9-9:45

October 22nd – Crafternoon 3:30-4:30

November 5th – Lego Day! -3:30-4:30

November 6th & 20th – Pre-School Storytime 9-9:45

November 24th – Crafternoon 3:30-4:30



The logo for Hughes Excavation features a large, stylized black letter 'H' inside a circular shape. To the right of the logo, the text reads: 'HUGHES EXCAVATION' in large, bold, black letters. Below this, it says 'Serving our community for 40 years!', 'Office: 541-929-3417', and '100% Employee-owned company'.

An advertisement for Deb's Café. At the top, it lists 'BREAKFAST LUNCH DINNER'. The name 'DEB'S CAFÉ' is written in large, bold, serif letters. Below the name, there is a black and white illustration of a smiling woman in a checkered shirt holding a large hamburger. To the right of the illustration, the text reads: 'DEB'S DEAL!', 'Buy One Hamburger at Regular Price, Get the 2nd HALF PRICE!'. At the bottom, the phone number '(541) 487-4424' is displayed in a bold font.

Alsea School District Update

by Krista Nieraeth, M.Ed

The new school year is upon us! We are excited to have our students back in the building and learning all the amazing things that our staff is planning. This year, our district welcomed Mr. Nicolaas VanDerZwan as the new 7-12 Science Teacher and Mr. Joe Harris as the K-12 Vice Principal/Athletic Director. We also welcomed, in the middle of last year, our first-grade teacher, Mrs. Emilee Shondell.

We opened our new Vocational Building this fall for our students and are working with Mr. Lynch in creating a school-based business in his new Digital Design class, which is open for students in grades 7-12. The high school is collaborating with Central Linn High School to provide a synchronous Spanish I class to offer our students. We were able to provide more opportunities for elective classes for our junior high students, including culinary and yearbook. The gym floor was completely redone this summer - the floor was fixed in places where it needed to be and completely repainted.

In our elementary school, we adopted new math curriculum to implement into our K-6 classrooms and are working with Learn at Home Oregon (LaHO) colleagues in creating Professional Learning Communities (PLCs) lead by LaHO principal Mrs. Shunk and Instructional Coach Mr. Pearson to help increase our learning in research-based literacy practices.



Our high school sports have started. Alsea hosted a Jamboree on August 31st, with 12 different teams coming from all over the state to participate. Both our volleyball and football teams did well, making great efforts and competing at this event. Our middle school football and volleyball teams have been working hard as well, getting ready for their games starting in September. Our current and most updated high school athletic schedules can be found on the OSAA website at www.osaa.org. The middle school athletic schedules can be found on our website and on our Facebook page.

Our School Board meetings are now on the 2nd Tuesday of each month, starting at 6pm. Please visit the board section of our website at alsea.k12.or.us/board/minutes-agendas/ for the dates and time for all board meetings, as well as the agendas. If you are interested in being on an email list to receive district information, please contact Nathan Roberts at nathan.roberts@alsea.k12.or.us.

For the most updated information about the happenings at Alsea School District, please be sure to visit our website at www.alsea.k12.or.us or follow us on Facebook. GO WOLVERINES!!!!!!!!!!!!



18687 Haines Rd
Alsea, Oregon 97324
541 609 6589

airbnb.com/h/country-valley-cottage-alsea

The Cottage
at
Bummer Creek

Mountain Views
Nature Trails & Creek
Disc Golf

NEW ART EXHIBIT NOW SHOWING AT THE ALSEA COMMUNITY LIBRARY AND COMMUNITY ROOM!



OCTOBER -DECEMBER
2024

“ILLUMINATIONS” by Dhira Lawrence



DHIRA'S OWN WORDS:

“Nature has always been an integral part of my art. Legend and myth appear out of the landscape and present themselves to us. My paintings show what is real in energy, what is present in spirit. Dancing lines, layers, shapes and colors are illuminated when I touch them to the canvas, they go where they want; I am the messenger only.”

dhiralawrence.com

Sponsored by ACE Art Committee and generously funded by Polly Plumb Productions

SAVE THE DATE

ANNUAL CHRISTMAS BAZAAR AT ALSEA HOPE GRANGE DECEMBER 7TH, 10AM - 3PM

MORE DETAILS COMING SOON, FOLLOW ALSEA HOPE GRANGE
ON FACEBOOK OR CHECK OUT THE WEBSITE
ALSEAHOPEGRANGE.WIXSITE.COM/ALSEAHOPEGRANGE



Any questions can be emailed to
alseahopegrange@gmail.com

CPI
CONSUMERS
POWER INC.

Powering our Communities
Empowered by Our Members

6990 West Hills Road, Philomath
800-872-9036 • 541-929-3124 • Rebates: 888-883-9879
www.cpi.coop

Be prepared for an emergency... update your contact information with CPI online or by phone.

Pioneer
CONNECT

**Spread
the Love**

GET ~~\$50~~ & ~~\$100~~
GIVE ~~\$50~~ & ~~\$100~~

when you refer a friend!

Offer valid through 12/31/2024

HISTORY OF THE SILETZ TRIBE'S SUPPORT IN THE ALSEA COMMUNITY

by Naomi Shadwick

The Confederated Tribes of Siletz Indians of Oregon (Siletz Tribe) enacted Ordinance §4.20, [Distribution of Net Revenues Ordinance](#), on July 6, 1999, and a Memorandum of Understanding (MOU) with the State of Oregon on September 4, 1999. With these two actions, the Siletz Tribal Charitable Contribution Fund and Advisory Board were created. Since its inception, STCCF has distributed more than **\$16.3 million in charitable grant awards**.

Charitable grants are awarded to charitable organizations and local governments within the Siletz Tribe's service area (**Lincoln**, Tillamook, Linn, Lane, **Benton**, Polk, Yamhill, Marion, Multnomah, Washington, and Clackamas counties) and to Native American organizations or activities located anywhere in the United States for the following purposes: education, health, public safety, gambling addiction, prevention, drug and alcohol treatment, housing, the arts, the environment and natural resource preservation, cultural activities, historic preservation, and other charitable purposes.

The following, while not complete, is a list of prior and ongoing support our neighbors the Confederated Tribes of Siletz Indians, have given to the projects our school, our non-profits, and the medical clinic completed over the past.

This relationship between Alsea and the Siletz Tribe began in the early 2000s with the Tribe's support for the Alsea Rural Health Clinic. The then Clinic Director/Doctor, Mary Ann Carr, approached the STCCF Board for assistance in purchasing and installing a new generator and propane tank for a total grant of \$25,000 which was awarded, and for the next few years, the Tribe provided additional small grants to support the clinic.

In 2019, Alsea Community Effort (ACE) was awarded \$1,500 for an art project, and Alsea Valley Gleaners (AVG) received \$3,935 for the purchase of a large freeze dryer.

In 2020, AVG received a total of \$8,943 for food and emergency supplies distribution and ACE received \$1,394 for assistance with the emergency preparedness/ham radio project.

In 2021, ACE received \$1,700 to help with the school's ham education project, and \$1,564 match for a propane tank for the new backup generator at the library building while AVG received \$3,703 for the purchase of food and ongoing operations.

In 2022, AVG received \$6,000 for food purchases and the Alsea Wolverines Booster Club received \$900 to purchase a new refrigerator for the school's concession stand as well as \$1,500 in matching funds to complete the installation of the electronic flag in the gym.

In 2023, the Alsea School District (ASD) received \$3,000 to provide direct services through the family services outreach program and \$2,061 to install the electrical and ductless heat pump in the new family services building. ASD also received \$2,675 for the art program which allowed them to buy a ceramic clay table and complete the January 2024 crowdad drop. Closing out 2023, AVG received \$2,100 in funds for site electrical upgrades and the Boosters received \$600 for use in doing parent outreach.

In 2024, the Boosters received \$2,000 to assist in the development of the after-school Alsea Youth Choir program and ACE received \$2,000 for its art program.

That's an identified total funded amount to Alsea orgs of **\$68,075** with an additional \$3,000 in submitted grant requests by AVG for the last quarter of 2024. The next deadline for grant submission is December 1, 2024 for the first quarter of 2025.

This article is being written in recognition of the generous support the Confederated Tribes of Siletz Indians; Inc. has provided the Alsea community over the many years. Without these support funds, the community's work for its residents would have been much more difficult.

Thank you to the Siletz People.

THANK YOU TO THE SILETZ TRIBAL CHARITABLE CONTRIBUTION FUND!



Galaxy A42 5G

ACE ART COMMITTEE MEMBERS KATHY PLAZA AND CHERYL ROSS POSE WITH OVERSIZED CHECK FROM **SILETZ TRIBAL CHARITABLE CONTRIBUTION FUND***

*Grant Funding for Uyen-Thi Nguyen’s Permanent Art Installation

DIAMOND CLEAN

Professional Cleaning Services

Air Duct Cleaning Carpet Cleaning
 Dryer Vent Cleaning Residential/Commercial

Your Local Alsea Cleaners
541-754-0360
 Todd & D'Ann Ledbetter Owners/Operators

Caring for the Health and Wellness of Our Community

Philomath Pharmacy | **Your Community Health Mart PHARMACY**

📍 1640 Main Street
 Philomath, OR 97370

☎ 541.929.2880

This pharmacy is independently owned and operated under a license from Health Mart Systems, Inc.

Blackberry Blast and Vendor Faire

By Meredith Howell

It was a blast – a Blackberry Blast. The newly revised event, bearing that name, was held on Saturday, September 7th and drew more than 150 community members and visitors to the Alsea Library and Community Center. Earlier this summer, ACE Board members were brainstorming ideas for an end of the summer community event. A couple Board members remembered that the community used to have a blackberry event that included a blackberry pie contest. The group decided to revive the event and bring the community together to enjoy a late summer afternoon of food, friends, vendors, and music.

Board member Kathy Plaza submitted a mini grant application to the Ford Family Foundation in July and ACE received \$1,000 to coordinate and help pay for event expenses. Additional donations were made by Lochmead Dairy who generously donated four tubs of vanilla ice cream for the event, the Corvallis Benton County Public Library who hosted the rock painting station, and the Alsea School District who welcomed parking on the lot adjacent to the library. And there was plenty of volunteer support. In all, more than 15 volunteers donated 120 hours of time to help plan and coordinate the event and bake blackberry pies, blackberry cobblers, blackberry cookies, and blackberry cakes.

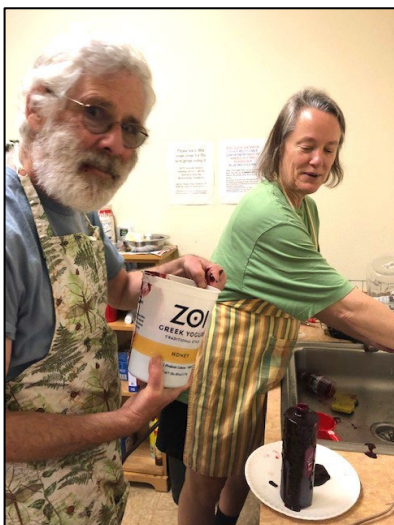
A local jazz trio, led by Steve Moore played during the event as well as Ships to Roam, a band based in McMinnville that played dance and folk/country music. The musicians set up under the portico of the building to keep them out of the sun. Tables and chairs were also set up outside under the portico for festival goers to enjoy hot dogs, hamburgers, veggie burgers, and chips. One volunteer made blackberry mayonnaise as a fun condiment for burgers and another volunteer made spiced blackberry ketchup. Blackberry mint tea and water were also available to enjoy.

We had many different vendors set up shop under canopies in the area in front of the building and sold crafts, raffled items, and represented local service clubs. Vendors included Pamela Russell with dried flower arrangements; Tom Loveday with woodworking and laser engraved items; Chloe Olsen and Alyssa Olsen with candles and leatherwork; Val Roldán with a tent full of T-shirts and other fun things; Danielle Giffen and Sierra Clingman with clothes, journals, vintage décor; Mystie Munsey and the Alsea Garden Club; Alsea Boosters selling merchandise; and Natural Solutions 3G with the Adair family.

ACE Board members, vendors, musicians, library staff, and volunteers were delighted with the fantastic turn out, the beautiful weather and the high level of community interaction and community spirit from ages young to old. There was general agreement that we need to figure out a way to have the event continue.

Personally, I can't wait to start picking blackberries again!





Thank You, Lochmead Dairy

By Kathy Adair

On Saturday, September 7th, 2024, the Alsea Community Effort (ACE) reinvigorated the Blackberry Festival into the Blackberry Blast and Vendor Faire. ACE board members and supporters picked and made lots of blackberry pies, cobblers, teas, ketchup, and mayonnaise. It was a fun event that was made even sweeter by the generous donation of vanilla ice cream and the use of the ice cream freezer by Lochmead Dairy. I was thrilled to know that Lynn Thomas (pictured below) was still my contact with Lochmead. He kindly also delivered and picked up the freezer for us to use for our event. Our heartfelt thanks go out to Lynn and to Lochmead for helping to make our event a sweet success.

For those who may not know, Lochmead Dairy is a family-owned business focused on producing high quality dairy products from their very happy cows! I have worked with them and Lynn Thomas for a number of years through my previous job and have been so impressed by their attention to providing some of the best milk and dairy products in our state. I can definitely tell the difference when I have had to go with a different brand of milk or ice cream.

Lochmead Dairy currently provides milk and dairy to Alsea School and milk, ice cream and other dairy products to the Mercantile. One of the best ways we can support their deliveries is to purchase milk, ice cream and dairy products from the Mercantile. The other benefit of this is that we are also supporting the Merc. I don't know about you, but I for one, value having both in our community. So, please join me in supporting both of these special businesses.



Providing primary care, dental, and behavioral health care for all ages.

We accept any insurance and are taking new patients at all locations.

Benton Health Center 541-766-6835

Lincoln Health Center 541-766-3546

Monroe Health Center 541-766-6000

[http:// BentonLinnHealthCenters.org](http://BentonLinnHealthCenters.org)



@BentonLinnCHCs

Celebrating



of service



**Severn Thomas, Agent
(541) 929-2534**

www.onelocalagent.com

2372 Main Street, Philomath, OR 97370

24 Hour Good Neighbor Service

INVESTING IN OUR COMMUNITY FOR MORE THAN 60 YEARS

Experience the Citizens Bank difference:

- An experienced banking team dedicated to customer service and our community.
- On-site Loan Officers who are empowered to make local credit decisions.



Good Business. Good Friends.

Philomath Branch
1224 Main Street • 541-929-3228
www.citizensEbank.com



Member FDIC





Art Unveiling Event

Come join us in the Alsea Library Community Room on Saturday, October 19th, from 2:00 to 4:00pm.

Everyone is invited to attend this special gala event!

The UNVEILING of the beautiful, Permanent Art Installation for the Alsea

*Community Library - created by the talented Cottage Grove Artist, **Uyen-Thi Nguyen.***

FINGER FOOD WILL BE CATERED

BY THE THYME GARDEN

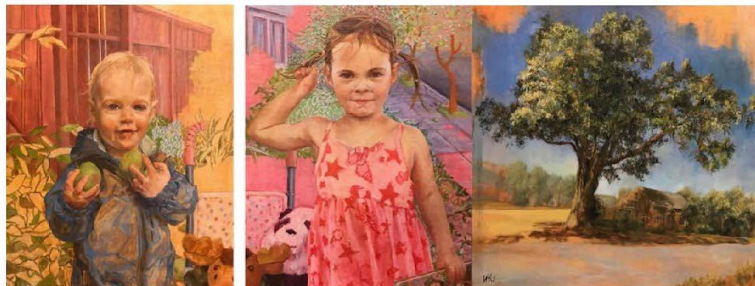
MUSIC WILL BE PROVIDED

BY STEVE MOORE & FRIENDS

Uyen-Thi's oil painting is the second of two permanent art installations selected by the *Ace Board* from a total of ten outstanding proposals. It will be installed above the entrance to the Library's Children's Area.



SAMPLES OF UYEN-THI'S ARTWORK



HOPE TO SEE YOU THERE!

This ACE sponsored project is generously funded by Friends of the Corvallis Benton County Public Library and the Siletz Tribal Charitable Contribution Fund.

Ethan “Big E” Dougless Cantrell

January 22, 2006 – August 20, 2024

Ethan was born on January 22, 2006, in Corvallis, Oregon. He was the cherished son of Chris and Jody Cantrell. On August 20, 2024, Ethan tragically passed away far too soon at the hospital surrounded by the love of his family, fiancée, future in-laws, friends and his close-knit Alsea community. His loss leaves a deep void in the hearts of all who knew him.

Ethan was a proud fifth-generation Alsea native, growing up in a logging family that spanned four generations. From a young age, he followed in the footsteps of his father and grandfather (Bonka), learning the craft and values of the logging life. This heritage gave Ethan a deep sense of pride and connection to the land and community he loved so much. Beyond his work ethic, Ethan’s heart was as strong as his hands, always putting family, friends and faith at the center of his life.

Throughout his life, Ethan was known for his many passions. A gifted athlete, he excelled in powerlifting, football and basketball, as well as in outdoor pursuits like hunting and fishing. He also took pride in his skills as a welder.

Ethan’s days were filled with activity, whether it was in the gym, on the field or spending quality time with those he loved. His tireless dedication to becoming the best version of himself was an inspiration to those around him, and despite setbacks from football injuries and illness, Ethan never wavered in his determination. His relentless drive led him to join the 900-pound club in high school, benching 365 pounds, squatting 450 and hang cleaning 225 pounds. His hard work earned him numerous accolades, including first-team linebacker and first-team center for both his league and the state of Oregon’s 1A six-man football. His final season was capped off with an appearance in the all-star game at Eastern Oregon University.

Ethan graduated from Alsea High School on June 7, 2024, a milestone in his young life that marked the culmination of years of hard work and personal growth. Since the eighth grade, he had been on a mission to improve himself, changing his diet, training relentlessly and always pushing himself to be better. But what set Ethan apart wasn’t just his physical accomplishments — it was his infectious love for life, his ability to lift up those around him and the genuine care he showed for others. Whether encouraging his teammates or supporting his friends and family, Ethan was a source of strength and positivity.

A central part of Ethan’s life was his relationship with his high school sweetheart, Kendra Stone. On July 1, 2024, Ethan proposed to Kendra in a beautiful, heartfelt moment, surrounded by friends and family as they watched the sunset. Their young love was the kind of pure, innocent bond that others could only admire and they looked forward to a bright future together. Kendra was by his side every moment until his passing, a testament to the deep love and commitment they shared.

But above all, it was Ethan’s faith in God that defined him. His unwavering devotion shaped every aspect of his life, guiding him in his actions and decisions. Ethan didn’t just talk about his faith — he lived it every day, whether through his humility, kindness or the respect he showed to others. His football sleeve, boldly emblazoned with the words “I fear God,” was more than just a symbol — it was a reflection of the deep reverence he held for his Creator. Ethan’s faith wasn’t based on fear but on love, respect and gratitude for the strength and patience he believed were gifts from God.

...continued on next page



...continued from previous page

Those who knew Ethan were always struck by his patience and steady demeanor. No matter how tough things got, Ethan remained calm and centered, always finding the good in people even when they couldn't see it themselves. He had an innate ability to make everyone feel like the most important person in the room, and his warmth and generosity extended far beyond his immediate family. To Ethan, family wasn't just defined by blood — it was about love, connection and being there for the people who mattered most. He made everyone feel like they were part of his family.

Ethan's impact on the world goes far beyond his physical presence; he left behind a legacy of love, compassion and unwavering faith that will continue to inspire those who knew him. Though his time with us was tragically short, the lessons he taught through his actions and words will remain with us forever. His kindness, generosity and respect for others serve as a reminder to live with more patience, love and faith. As we move forward without him, we carry the responsibility to keep his spirit alive by embodying the qualities that made him so special. We promise to be the light in others' lives, just as Ethan was in ours, remembering the love, laughter and support he gave so freely. By striving to offer the same to those around us, we not only honor Ethan's memory but ensure his legacy of love and faith will continue to shine for generations to come. Though Ethan left this world far too soon, his impact will resonate for years as we hold on to the values and lessons he shared with us.

Ethan is survived by mother, Jody Cantrell; father, Chris Cantrell; sisters, Kimberlee Cantrell (fiancé Cooper Robert), Myla Cantrell and Thea Cantrell; fiancée, Kendra Stone, and future in-laws, the Stones and Bells; grandmother, Terry Lunsford; grandfathers, Steve Cantrell, Leroy Lunsford and Louis Guaschino; aunts, Karen De Loriea, Debbie Medina, Marci Gilday, Katie Guaschino and Beth Cantrell; and uncles, Joshua Cantrell and Steven Guaschino. Ethan wasn't just survived by his family and future family but an unimaginable list of people from rural and small towns all over Oregon!



Les Hockema

By Naomi Shadwick

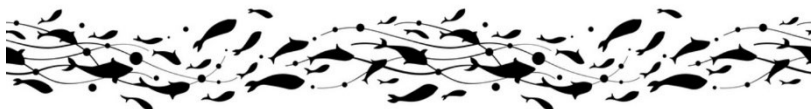
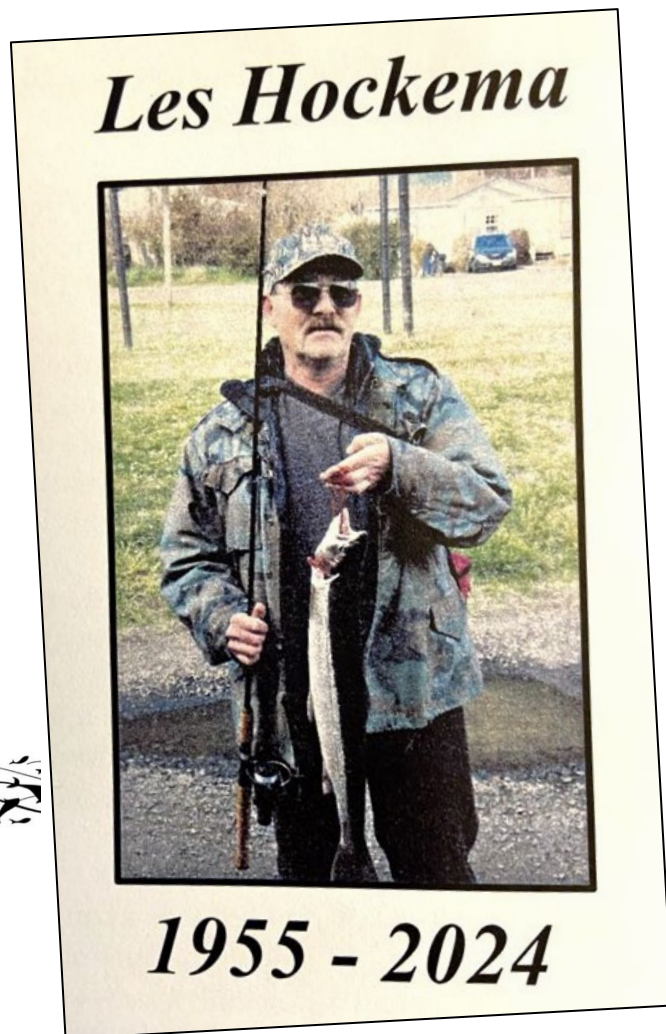
Another member of one of our long-time families (the Hockemas), Leslie Edward Hockema walked on July 25, 2024, at the age of 69. Les spent his early years in Alsea working at an early age with his mom at the Alsea River Café before heading off to Alsea School. As he grew, he developed a desire to travel and explore and hitchhiked from the West Coast to the East Coast.

His adventures continued when at 17 he joined the US Navy. However, that adventure was cut short when he was injured and received a medical discharge. He returned to Portland in education to become a D&A counselor when he met his lovely wife, Sandy. In time, they both realized that the busy city life was not for them, so they came back to Alsea.

Back in Alsea, life became less of an adventure but filled with purpose. His hobby as a collector grew as he engaged in the Alsea community by helping wherever needed. His patriotic nature gave him the desire to make sure veterans were recognized and the Alsea town flags were flying on every holiday. He was also an enthusiastic Wolverines supporter, especially when it came to the Alsea school football games.

Les will be best known for his skills as a fisherman. He could catch fish when no one else could. In his later years, he began to distribute the fish he caught to the elderly residents and others who were not able to make it to the river or fish for themselves. Each salmon and steelhead season he would work down the list delivering freshly caught fish to those on the list. When the list was completed, he would start over again.

While in his life Les traveled from coast to coast, served in the military, and spent 30 years living in Portland, he always ended up returning to Alsea and his roots.



Matt Clark

By Sandy Morrow

I wanted to write something about Matt.



My husband and I moved here almost nineteen years ago. We met Matt right away. We were happy to see John Boy's Mercantile because it had everything you needed. We became fast friends with John and Matt.

Matt was the kindest person and he supported all events in Alsea. If someone was in need, or had a loss or hardship, he was there. He made deliveries to people. Gave rides to people. He was a true neighbor.

But, man oh man was he mischievous. That damn squirt gun!!! And he had some elaborate pranks too! He tortured me. Everyone. It was because he loved us. Matt was a true example of love. I just hope he knew how much we all loved him. He was family to us. He was our constant.

We know how much he loved his kids, Jane and Jax. He was so proud of them and his family. He also had a special person. I am so happy he was loved.

As physically strong and hard working as he was, he was broken.

I am not angry at him. He was determined. But he left us empty and heartbroken.

I went to the store yesterday for the first time since he passed away 4 months ago. My heart goes out to all of the people who work there and how strong you have had to be. You are all amazing. There is really not much more to say. We will love you forever. WE will miss you forever. And our memories of you are always with us. Forever.



Benton County Community Update – City of Alsea

Safe Routes To School: The project is currently out to bid, with the bid opening scheduled for Tuesday, August 27th. We expect to have a contractor on board shortly thereafter. The contractor will be responsible for providing a detailed work plan and schedule. Once we have this information, we will be able to provide a more comprehensive update to the community. Due to delays in the bidding process and material shortages, the project is now expected to be substantially completed by the end of the year. Some finishing work may extend into next year, depending on the availability of electrical materials. Please check the [Public Works Projects webpage](#) for the latest updates.

Regional Solutions: The South Valley/Mid-Coast Regional Solutions Team will be visiting Alsea on Monday, September 23 to meet with community leaders and learn about local priorities. Regional Solutions is a uniquely Oregon approach to community and economic development that brings together the public, private, and civic sectors to advance projects, solve problems, seize opportunities, and respond to emerging local needs. The Regional Solutions Team visiting Alsea includes the Regional Solutions Coordinator from the Governor's Office and agency representatives from Business Oregon, Oregon Dept of Transportation, Dept of Environmental Quality, Dept of Land Conservation and Development, Oregon Housing and Community Services, and U.S. Dept of Agriculture as well as other regional partners.

Water Update: Saunders construction has commenced with work at the Alsea pump and tank site. One of the immediate things accomplished was cutting back all of the blackberries that engulfed the wellhouse. It now visible, and crews will be doing some leveling and drainage work to ensure water doesn't continue to accumulate next to the wellhouse.

We also discovered a hive of bees living in the one corner of the wellhouse. The bees were professionally removed, and we are now wondering if we should be marketing Alsea Blackberry Honey?? The damage caused by the bees, and generally sitting in the weather for years and years will require the wellhouse to be rebuilt. This work was anticipated in the plans, so not an unexpected item.

During this time residents can expect increased traffic on Highway 34 with the specific work located to the east of the Alsea Public Library. Construction noise may also occur between the hours of 7 AM and 6 PM. There are currently no scheduled interruptions to water service during the construction period. If service outages are required, further notification will be provided in advance with the anticipated duration of the service interruption.

Thank you for your patience while we complete these system improvements. If you have any questions or concerns, please reach out to Benton County Public Works at (541) 766 - 6821 or email: pwinfo@bentoncountyor.gov

Generator Update: The vendor was able to complete the needed repairs sooner than originally anticipated. The new portable generator has been delivered to the Alsea Sewer Treatment facility. Thank you for your patience as we waited for its delivery, and then the subsequent repairs.

Should you have any concerns, please feel free to reach out to us. During regular business hours, please report any issues on the Alsea water or sewer systems to the main Public Works phone number at (541) 766-6821. After hours, please call the Benton County Sheriff Office's dispatch number at (541) 766-6858 and they will contact the appropriate on-call staff member.

continued on next page...



...continued from previous page

EPA Community Change Grant: Benton County is preparing an application for an Environmental Protection Agency Community Change Grant. The proposal is focused on the development of Resiliency Hubs within Benton County, where renovation projects on three (3) existing community facilities in Monroe, Philomath, and Alsea will take place to turn them into Resiliency Hubs. Resiliency Hubs, a newer term dubbed by city leaders in Baltimore, originated the concept in 2014 and has expanded nationally since. These hubs are community-serving facilities augmented to support residents, coordinate communication, distribute resources, and reduce carbon pollution before, during, and after a natural disaster event. The (3) three-year project, if awarded, will include the engagement of local communities to inform the development of each hub, will strengthen the capacity of local organizations to participate in planning and better serve their community, support a diverse network of community members throughout the cycle of natural disasters, and improve local emergency response efforts.

Alsea has proposed to utilize the Alsea Elementary-Middle-High School as a Resiliency Hub site. Planned facility improvements include a 5,000 sq ft addition with a large room for shelter, commercial kitchen, walk-in coolers, and food storage. Emergency generators, solar panels, and efficient HVAC systems will be installed. ADA accessible restrooms and showers will be included as well as offices for emergency command. Roof, window, and insulation replacements to improve energy efficiency of the existing facilities are included in the plans. If awarded, the project will begin immediately and not exceed three years.

Helping Hands & Blackberry Fun


This past July the Alsea Garden Club received another helping hand (or rather several) from the Youth Summer Work Program through the local Community Services Consortium. The AGC was thrilled when the CSC reached out again to help in the Memorial Garden, which is constantly growing!


The work crew provided the labor allowing them to exercise a skill set and earn some money at the same time. The crew spent several days weeding, cutting, digging bulbs, planting a tree, and was able to do a very thorough cleanup in the garden at the west end of town. The Alsea Garden Club THANKS YOU!

And just recently, the AGC enjoyed attending the delightful Blackberry Blast, held on the Alsea Library grounds Sept. 7th. We were able to interact with the community, answer questions about our club, and we even gained a new member. Stay tuned for exciting changes and updates coming to Alsea as we continue our mission to beautify the town!

- Mystie Munsey








Health Navigation

— — — — —

We support your insurance needs and can connect you with local resources!

— — — — —

Alsea Community Library
Every Thursday, 1:00 - 5:00 pm



Oscar Monroy
Health Navigator

Healthy people, strong communities

Date: October 3rd, 2024

Free Nitrate Screening at Alesia Community Library

Source: Elias Stroock, OSU Extension Service Intern

Alesia, Oregon: Oregon State University Extension Service will be providing free nitrate testing for community members that have domestic wells. The event will be at the Alesia Library community room, located at 19192 Alesia Hwy. This screening will be held on Thursday, October 3rd from 3-6pm.

Nitrate is a contaminant in groundwater that can cause many health issues. If you have a domestic well, it is important to test at least once a year and regularly in homes with infants, pregnant women, and immune-compromised individuals. It is not naturally occurring, so if nitrate appears it is possible that other contaminants have reached the groundwater.

To get a free nitrate test at our screening, bring about 1/2 a cup of unfiltered well water in a clean container. The test will only take 5-7 minutes if the clinic is not busy. Various educational resources will be available concerning nitrate, other groundwater contaminants, well water, and septic-related topics.

For additional information on well water and septic systems, free Rural Living Basics classes, and other nitrate screening events, visit the OSU Extension Service website <https://wellwater.oregonstate.edu/> or for more information call 541-713-5009.



FREE Nitrate Screening

Alesia Community Library

October 3rd from 3 pm - 6 pm

Where: Community Room at 19192 Alesia Hwy, Alesia

What to Bring: 1/2 cup of unfiltered well water in a clean cup to be tested. Testing will take 5-10 minutes

Why: High *nitrate* levels can cause short and long term health effects

Questions? Contact Chrissy Lucas at chrissy.lucas@oregonstate.edu or 541-713-5009

For a schedule of upcoming events go to <https://wellwater.oregonstate.edu>



Oregon State University
Extension Service

Highway 20 Safety Group

By Michelle Flamez

Hello from the other side of the mountain, over here in Blodgett! I know driving behaviors are getting increasingly worse everywhere and I decided to try to do something about it in my neck of the woods. After we had several fatalities over here on Highway 20, I decided to start a Highway 20 Safety Group Facebook page, so that we can hopefully cause a change! (We live right on Highway 20 and my husband drives it to work. Co-founder, Amanda Mahr, works at the Blodgett store, so we see firsthand how bad it is). Since then, there have been even more fatalities, and unfortunately, we are up to eight since January. That's a fatality a MONTH! In January I wrote to ODOT and got excuses as to why they can't do anything, mainly because of lack of funding and there haven't been enough fatalities. Tragically, that's how it works. I was told it's bad everywhere and what mitigating steps have been taken, like the rumble strips.

Since then, we've gotten some help from some friends in Alsea - thank you Nancy Chandler and Naomi Shadwick! It was suggested that we form a Citizens Advisory Coalition. We've done that! We have eight members from our community and two advisors. We plan to partner with Alsea's new community development organization ACAC for outreach and advocacy work. We'll be having our first meeting soon, contacting our state reps, defining the issues, talking about solutions, etc. Our Facebook group has grown to over 750 members as well! We just wanted to share this with your community and will keep you updated with our progress.

Here's a link to our Facebook group: www.facebook.com/groups/1017457666512634/ or search on Facebook for Highway 20 Safety Group.



Keep Oregon Green

Prevent Wildfires
DO YOUR PART:
keeporegongreen.org



At your service,
every day.



Proudly supporting family farms and local businesses since 1970


- WIC and Oregon Trail accepted
- Monthly "Owner Sale Day" discount
- Humanely-raised local meats
- Deli, salad bar, and hot bar
- Fresh, local, organic produce
- Get as little or as much as you need in our extensive bulk section

South Corvallis North Corvallis Open daily
1007 SE 3rd St. 2855 NW Grant Ave. 7am - 10pm
 (541) 753-3115 (541) 452-3115 www.firstalt.coop

Anyone Can Shop at the Co-op and Everyone Saves!

Jay Widmer's

Alsea Anagama Kiln
wood-fired pottery from the Oregon Coast Range



27495 Alsea Highway
541-487-5712
www.jaywidmer.us
Facebook: Jay Widmers Alsea Anagama Kiln
call or email for a viewing

fermentation crock

REGULAR EVENTS CALENDAR

EVENT/NAME	LOCATION	DAY	TIME	PHONE NUMBER
Alesea Community Effort Board Meeting	Online - Zoom	3 rd Thurs Monthly	6:30 pm	541-487-5061
Alesea Community Action Collaborative (CAC)	Alesea Library	1 st Monday Monthly	6:00 pm	541-602-7819
Alesea Fire Dept. Board Meeting	Alesea Fire Hall	Last Tues Monthly	7:00 pm	541-487-8701
Alesea Fire Dept. General Meeting		Wednesdays	7:00 pm	
Alesea 4-H Small Animal Club		1 st & 3 rd Thurs Monthly	6:00 pm	541-207-6552
Alesea Wolverines Booster Club				503-740-9639
Alesea Food Bank	Jeni's Place	Thursdays	10:00 am-4:00 pm	541-487-3663
Alesea Garden Club	ACF Church	2 nd Sat Monthly	12:00 pm	541-760-3856
Men's Bible Study	ACF Church	1 st Sat Monthly	8:00 am	541-487-4442
Alesea HOPE Grange	Grange Hall	1 st Thurs Monthly	6:00 pm	541-486-4215
Line Dance Class		Mondays	6:00 pm	541-452-1919
Alesea School Board Meeting	School Library	2 nd Tuesday Monthly	6:00 pm	541-487-4305
Alesea Valley Gleaners Distribution	18889 Haines Rd	Fridays	2:00-7:00 pm	503-951-2499
Stitch and Rip Quilting Club	Various (please call)	Mondays	10:00 am-3:00 pm	541-487-8011
Alesea Kitchen Club	Alesea Library	2 nd or 3 rd Sun Monthly	2:00-4:00 pm	503-255-8055

Check out the full Alesea Valley Community Calendar at www.alseaoregon.us

ALSEA VALLEY VOICE

Alesea Community Effort
19192 Alesea Highway
Alesea, OR 97324

NONPROFIT
U.S. POSTAGE
ALSEA, OR 97324
Permit No. 135
ECRWSS

*****ECRWSSSEDDM***

Postal Customer
Alesea, OR 97324

September - October 2024